

CORDIN

SCIENTIFIC IMAGING

IMAGE CONVERTER STREAK CAMERA

Model 164

- **Wide photocathode**, 18mm x 3mm
- **High spatial resolution**, 50 lp/mm
- **High temporal resolution**, 50 ps
- **Very low noise**, 10^{-8} Cd/m²
- **High resolution readout**, 14 bit, 4 megapixel CCD
- **Variable width slit**
- **Nikon F lens mount**



(Model 164 shown with optional objective lens)

Streak cameras record a thin, wide line of light signals at the fastest possible speeds. They capture subtle variations in intensity from a line image, a spread spectrum, or linear array of discrete signals with resolution down into the picoseconds.

The **Cordin Model 164** streak camera is the evolution of Cordin's more than 25 years of experience in streak camera design and manufacturing. It uses a streak tube with a large photocathode and high spatial resolution to give a broad range of data capture capability. It has an integrated, high resolution, high dynamic range CCD readout that ensures all information is captured in both detail and gray scale.

The 164 comes standard with a photocathode offering spectral sensitivity from 350nm to 800nm. Sensitivity ranges covering from 115nm to 1550nm are available.

The entrance slit is a user adjustable mechanical slit, so that resolution versus input energy can always be optimized. The input optics have an easily accessible telecentric region for drop-in filters.

The camera is controlled via a standard Ethernet interface and a Windows PC. The host software allows for control of all camera functions, triggering and delays, image acquisition, display, and basic image analysis.

OPTIONS

Spectrograph coupling for time resolved spectroscopy

Multi-channel fiber optic linear array input for optical signal analysis

Alternate photocathode materials for choice of wavelength range sensitivity

UV configuration

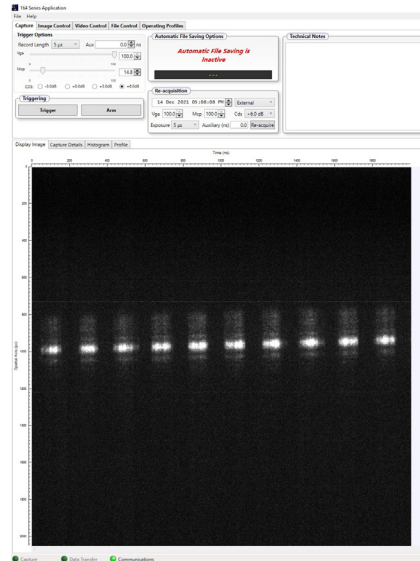
Objective lenses (F-mount included with camera)

CORDIN

SCIENTIFIC IMAGING

Model 164

IMAGE CONVERTER STREAK CAMERA



Screen shot of the Model 164 user interface

SPECIFICATIONS

STREAK TUBE

Temporal Resolution	50 picoseconds
Spatial Resolution	50 line pair/mm
Spectral Response	350-800 nm std. (S25) 115-1550 nm optional
Photocathode	18 mm x 3 mm
Sweep Nonlinearity	less than 10%

INTENSIFIER

Device	25 mm Ø MCP
Photocathode	Super S25
Gain	10,000 watts/watt
Shutter Ratio	10,000,000 : 1
Grey Scale	42 dB to 48 dB

CCD READOUT

Pixels	2K x 2K
Device Type	Full resolution progressive scan
Dynamic Range	14 bit

TRIGGERING AND INTERFACE

Response Time	less than 35 nanoseconds
Jitter	less than 50 picoseconds
Trigger Input	+5V
Interface	Ethernet to Windows PC host

GENERAL

Power Input	110-250VAC 50-60 Hz
Weight	14 kg (32 lbs)

